



Parent's Guide to Career Cruising:

Online College and Career
Readiness Resource
for
Secondary Students

GPISD Parents

Are you looking for opportunities to support your child in developing their college and career goals?

GPISD Counseling Services is committed to supporting your student by helping them identify their interests and skills and developing a career plan that is specifically tailored to them.

Career Cruising allows students to connect the work they do in the classroom with their college and career goals.



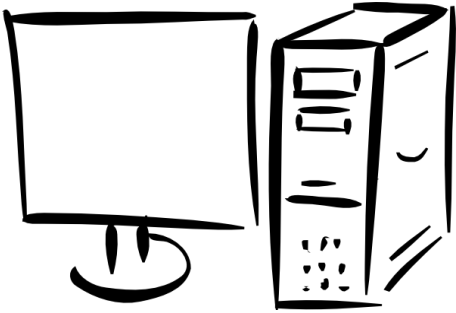
What is Career Cruising?

Career Cruising is an internet-based career exploration and planning tool used by your student to explore career and college options and develop a career plan.

Career Cruising allows your child to:

- ❖ Assess their interests, skills, and abilities
- ❖ Create a career profile linking career interests with college programs
- ❖ View interviews of professionals in their area of interest
- ❖ Access college information, financial aid, and a scholarship database
- ❖ Build an electronic personal graduation plan
- ❖ Create a résumé to begin their career endeavors
- ❖ Your child will be able to use this program for course registration for 9th through 12th grade courses.

How do I access Career Cruising?



Career Cruising can be accessed from school, home, or anywhere your son or daughter has access to the internet.

Go to:

<http://www.careercruising.com/login/GP>

Student Login: GP-Your Child's Student ID

Student Password: Your Child's Date of Birth

Example:

Student Login: GP-111111

Student Password: 12122014

For questions on your login contact your campus school counselor.

How do I access the Career Cruising Parent Portal?

Career Cruising has a Parent Portal where your child can invite you to view their career portfolio.

- Student will go under My Plan on Career Cruising online profile.
- Choose option to Share My Plan with Parent/Guardian.
- Career Cruising will allow your student to input your email and you will receive a Log In.

Visit the following website:

<https://www.careercruising.com/Parent/default.aspx>

View our web page for more information:

www.gpsd.org/careercruising



QUESTIONS OR CONCERNS?

CONTACT YOUR STUDENT'S SCHOOL COUNSELOR

DANA JACKSON
DIRECTOR OF COUNSELING SERVICES
dana.jackson@gpsd.org
2602 SOUTH BELT LINE ROAD
GRAND PRAIRIE, TX 75052

www.gpsd.org/counselors

