



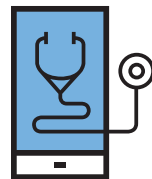
Your Doctor Is In...Provider Finder[®]

**Spend less time
looking for a doctor
and more time
enjoying your life.**

Provider Finder from Blue Cross and Blue Shield of Texas (BCBSTX) is a fast, easy-to-use tool to find your next health care provider. Plus, it can help you manage health care costs.

Go to bcbstx.com and log in or create a Blue Access for MembersSM (BAMSM) account and click on the Doctors and Hospitals tab in Provider Finder to:

- Find in-network providers, hospitals, laboratories and more.
- Search by specialty, ZIP code, language spoken, gender and more.
- See clinical certifications and recognitions.
- Estimate the out-of-pocket costs of more than 1,600 health care procedures, treatments and tests.*
- Use quality awards such as Blue Distinction[®] Center (BDC), BDC+ or Blue Distinction[®] Total Care to inform your choices.
- See side-by-side provider or facility quality ratings and patient reviews.*



Go Mobile with BCBSTX

At bcbstx.com, log into or create your BAM account. You can stay linked to your claims activity, member ID card and coverage details. It's also where to see prescription refill reminders and health tips by text messages at 33633.

*Available for most networks and plans.