
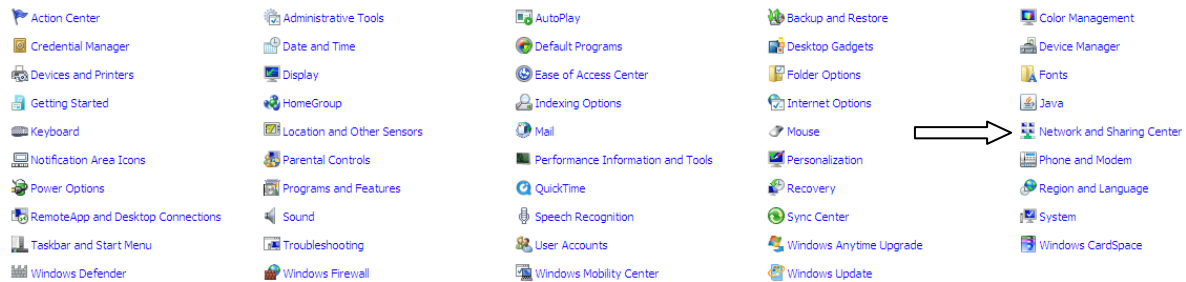


Unable to connect to GPISD Wireless with your Personal Device (Windows 7)?

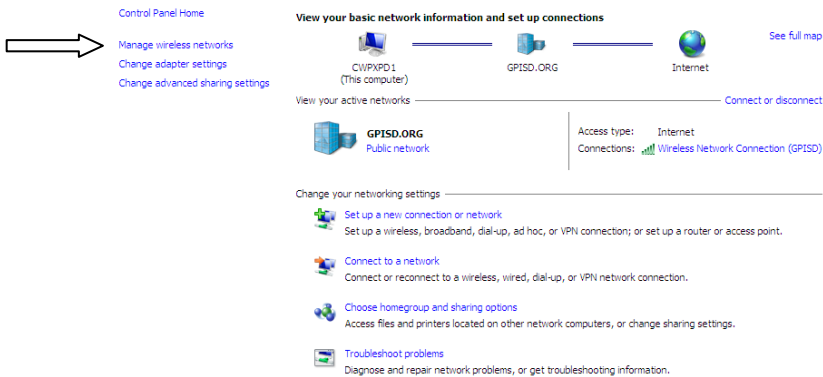
Please follow the steps below.

- Open Network Sharing Center by clicking the Start button , clicking Control Panel, clicking Network Sharing Center.

Adjust your computer's settings



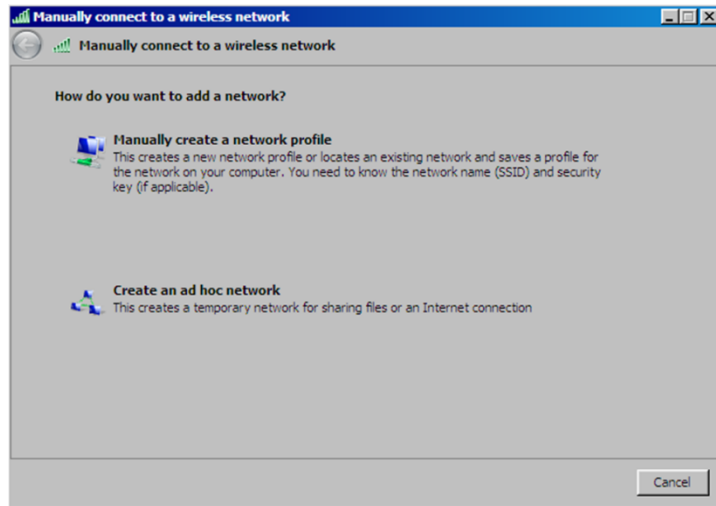
- Click Manage Wireless Networks



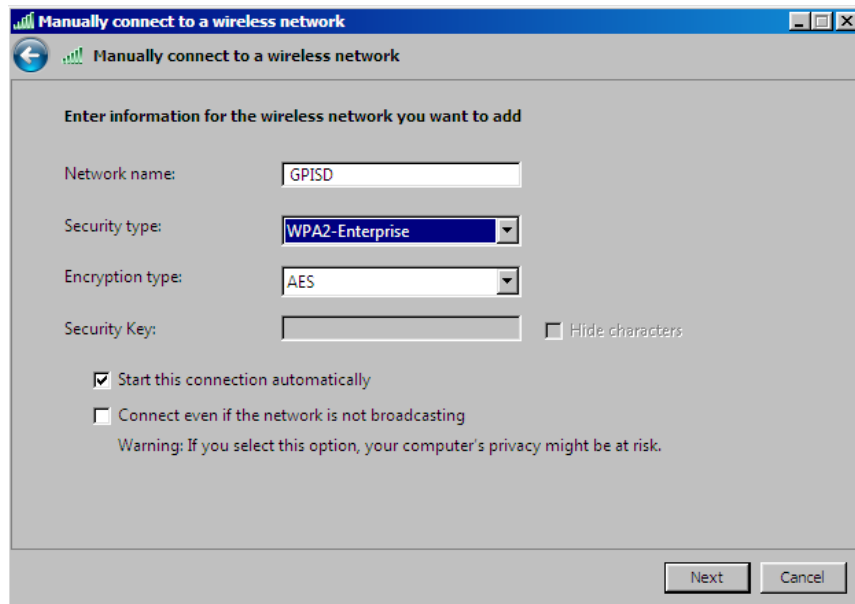
Click Add



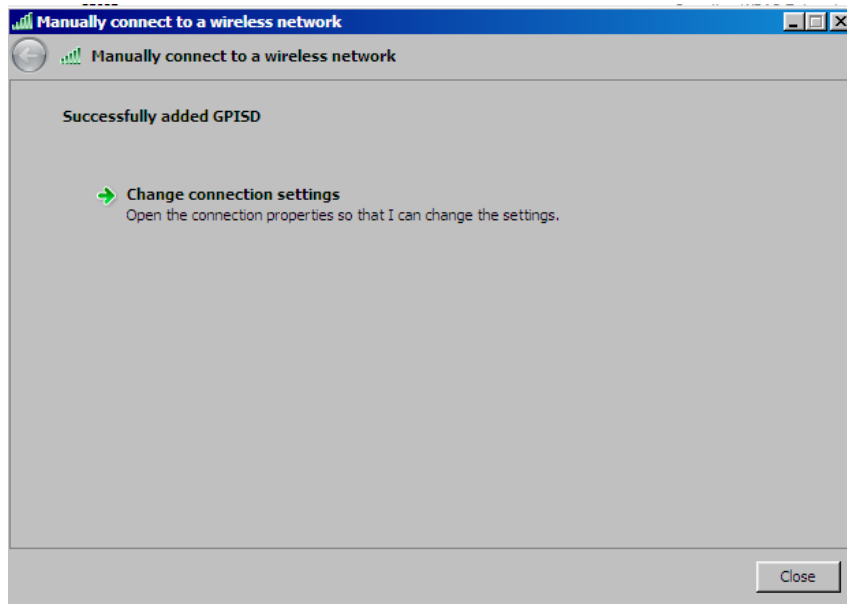
Click Manually create a network profile



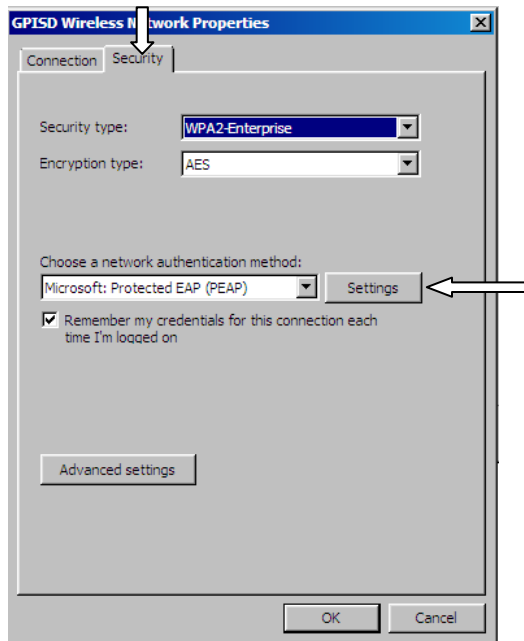
- Network name: GPISD
- Security type: WPA2- Enterprise
- Encryption type: AES
- Click Next



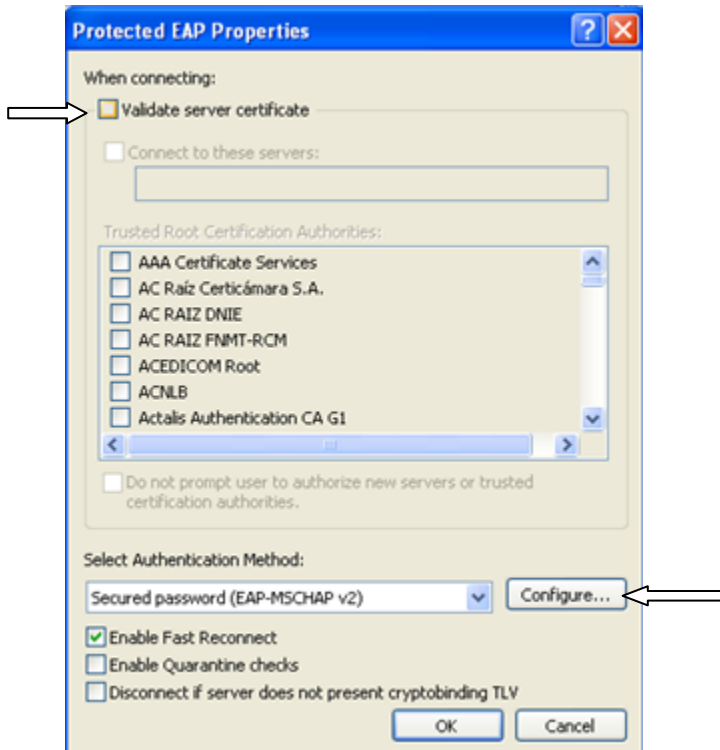
Click Change settings



- Click Security Tab
- Click Settings

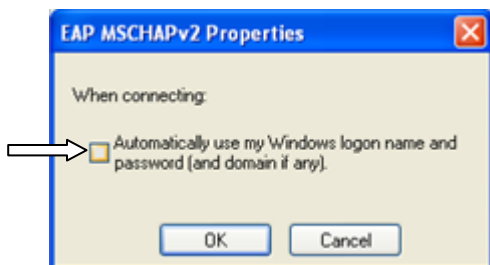


- Uncheck Validate server certificate
- Click Configure

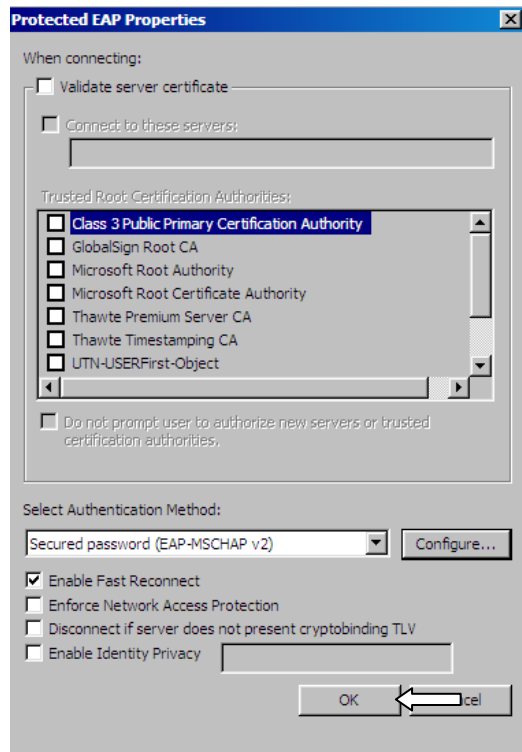


EAP MSCHAPv2 Properties Dialog appears

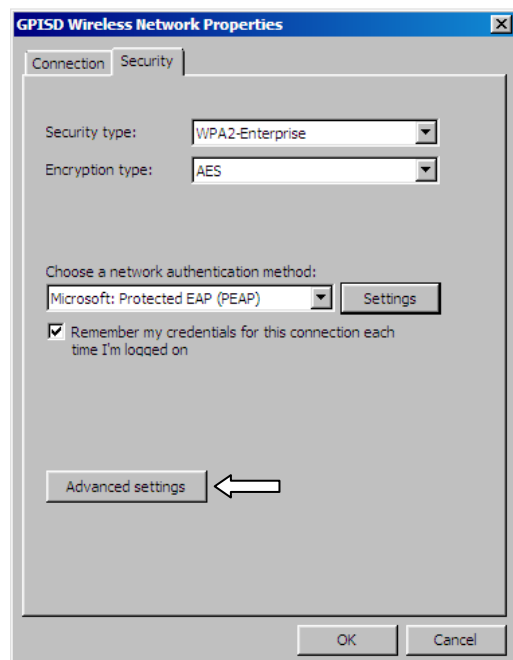
- Uncheck the box & click ok



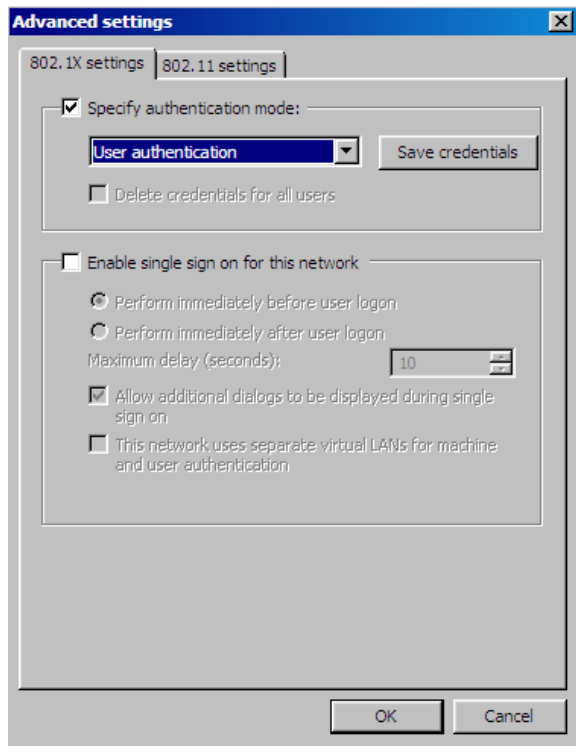
You will return to the Protected EAP Properties dialog box, click ok



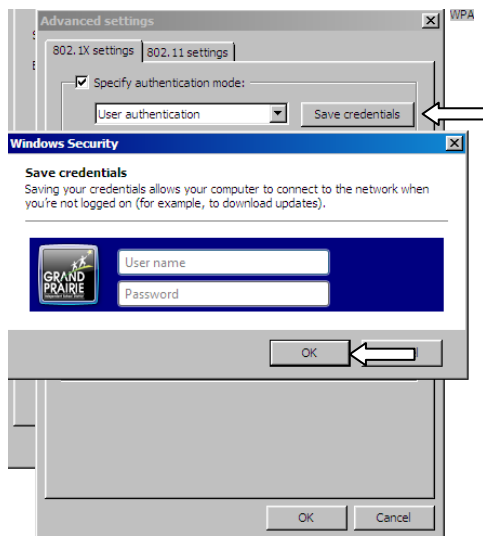
- You will return to the GPISD Wireless Network Properties dialog box
- Click on Advanced Settings



- Check Specify authentication mode
- Select User authentication from the drop down menu



- Click Save credentials
- Windows Security box appears
- User will enter Windows username & password; click ok



GPISD wireless should connect successfully .