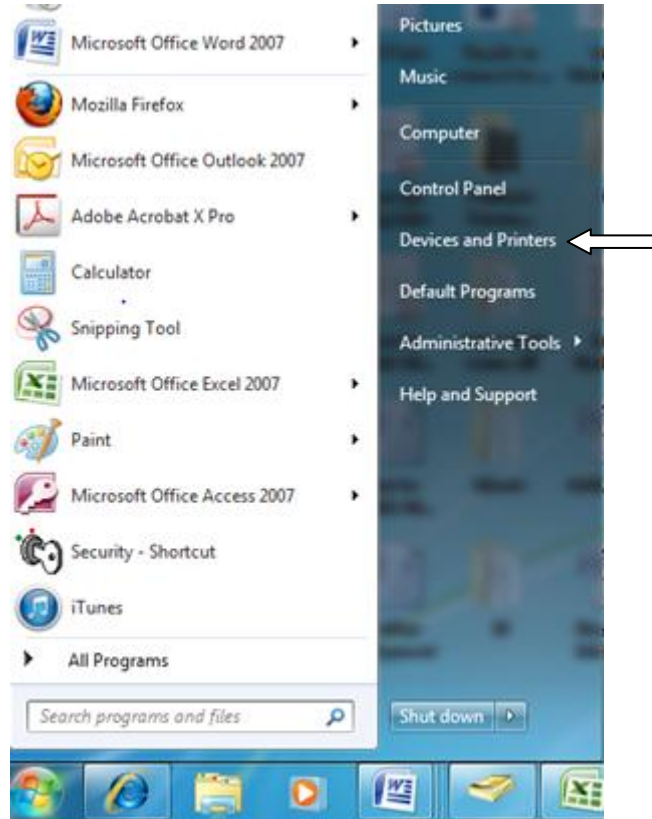
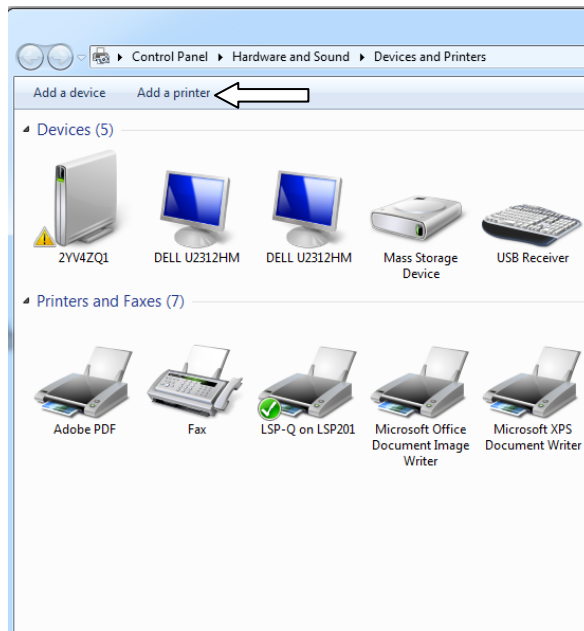


Adding a Network Printer – Windows 7

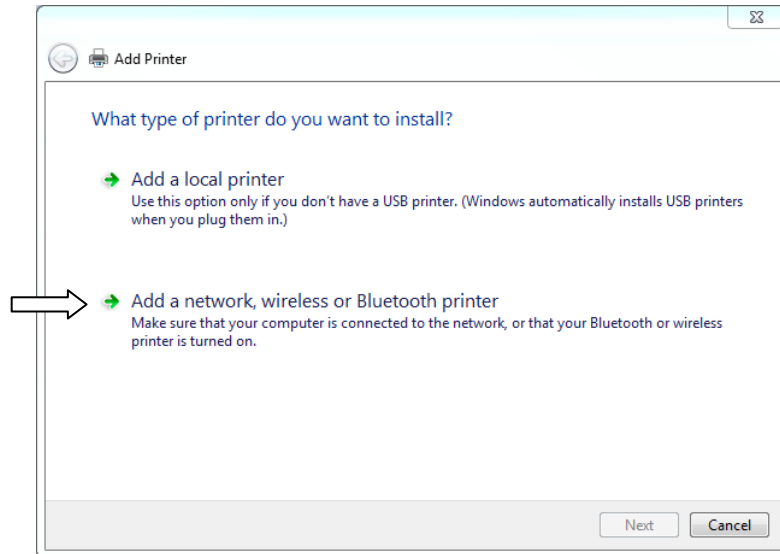
From the Start menu, click **Devices and Printers**.



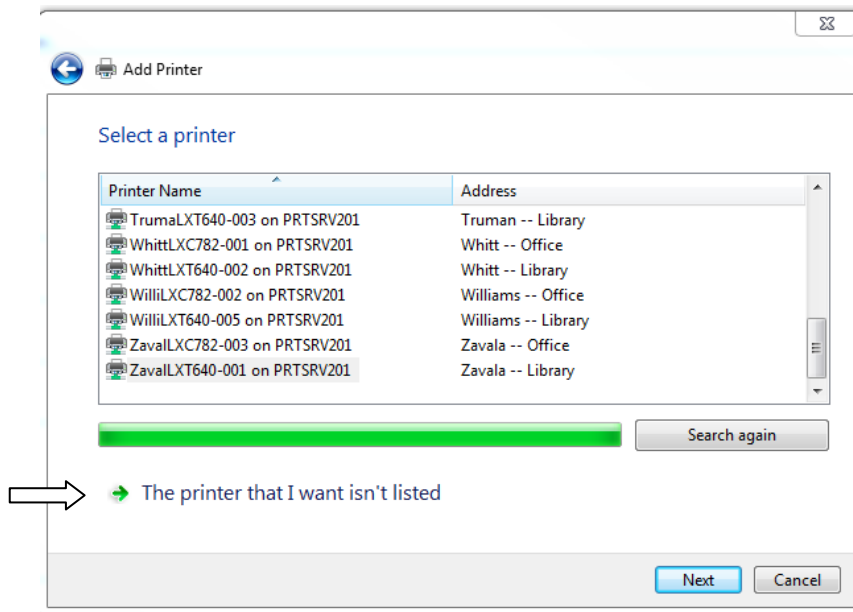
Click on **Add a printer**.



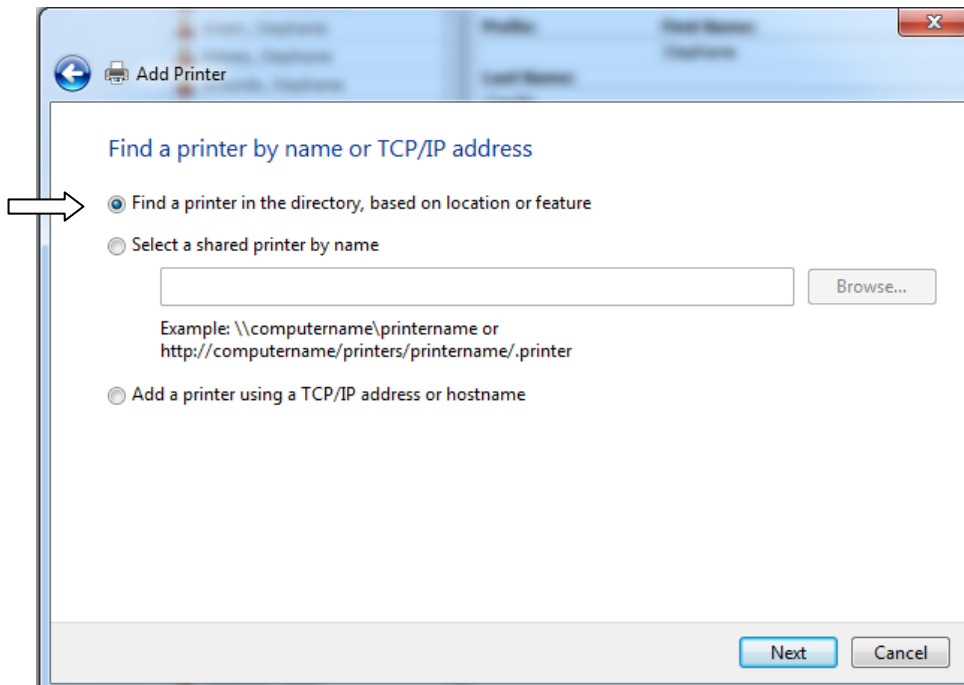
Click the green arrow next to **Add a network, wireless or Bluetooth printer.**



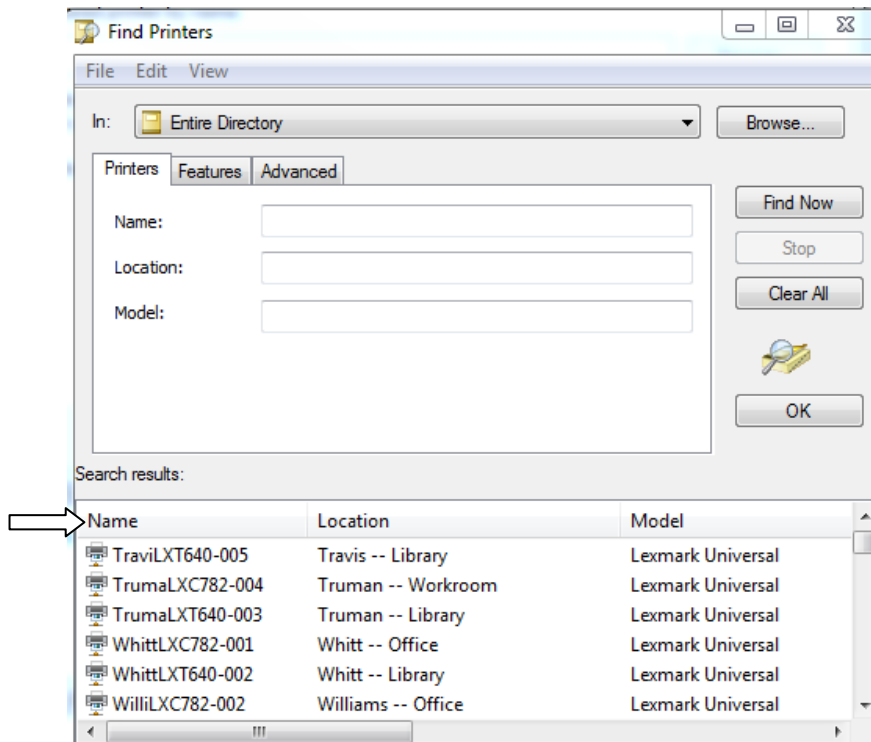
Click the green arrow next to **The printer that I want isn't listed.**



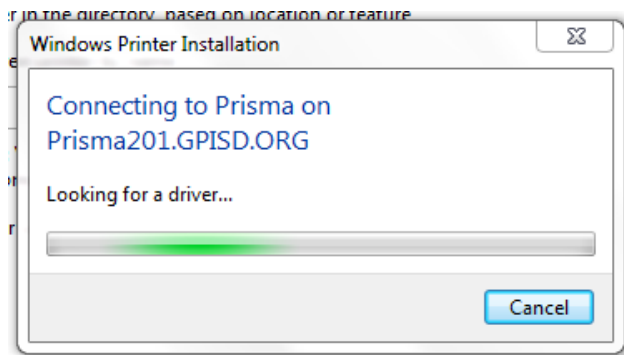
Select **Find a printer in the directory, based on location or feature** & click **Next**.



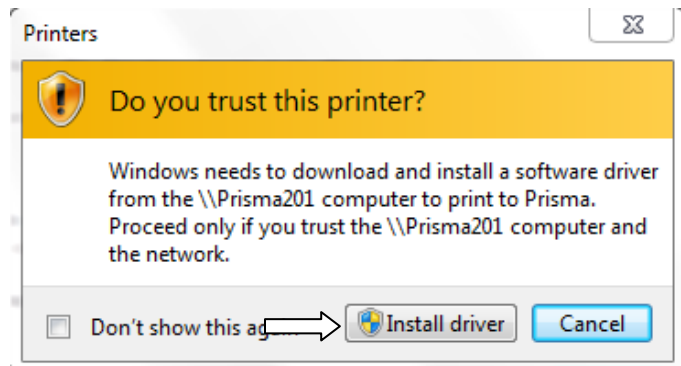
A list of printers will appear. I recommend you find your printer under the **Name** column. Once you find your printer, double click on the printer's name.



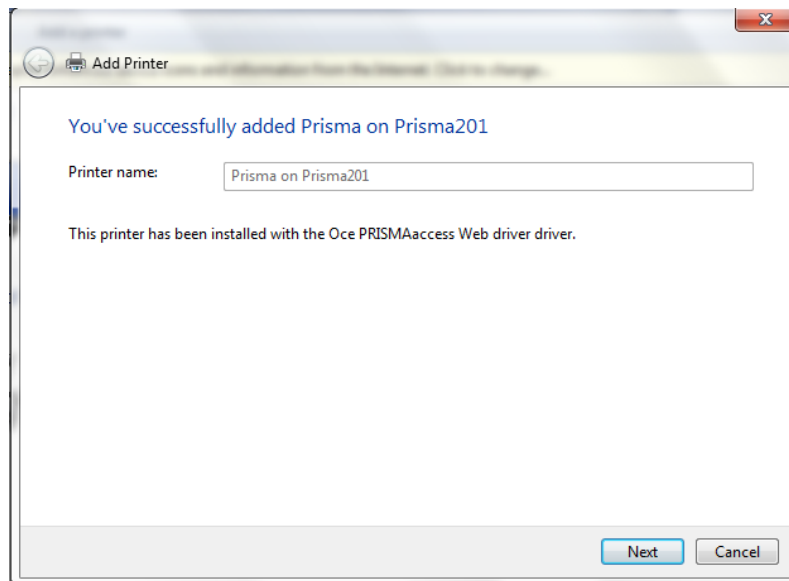
Windows Printer Installation box appears.



Please click on **Install driver**, if you receive this box. If this box does not appear, please proceed to the next step.



You've successfully added your printer. Please click **Next**.



Deselect the check mark if you do not want to set as the default printer.
Click **Finish**. The printer will appear in your printers list.

